

# The application of mechanical parts processing industry



**KM series of cutting tools in the following materials processing HRC50**

# Customer: a textile machinery company



**Criteria: single side edge finishing tool for C12MoV material components for 3 days,**  
**Quality requirements: workpiece surface texture, Ra2.0,**  
**produced no flash situation**

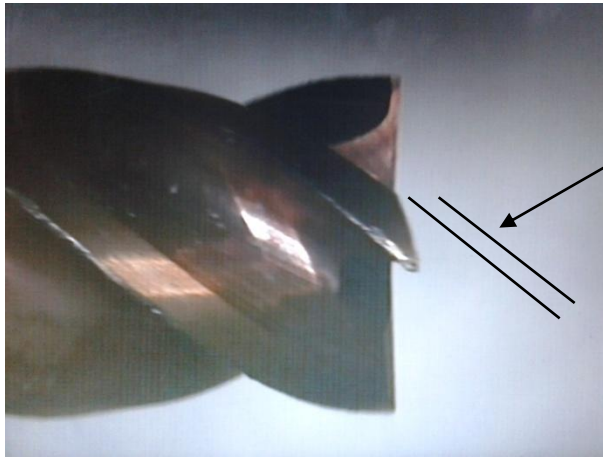
**Tool: KM4ED**  
**Tool edge diameter: 6 mm**  
**Tool type: end milling cutter**  
**Cutter blade number: 4**



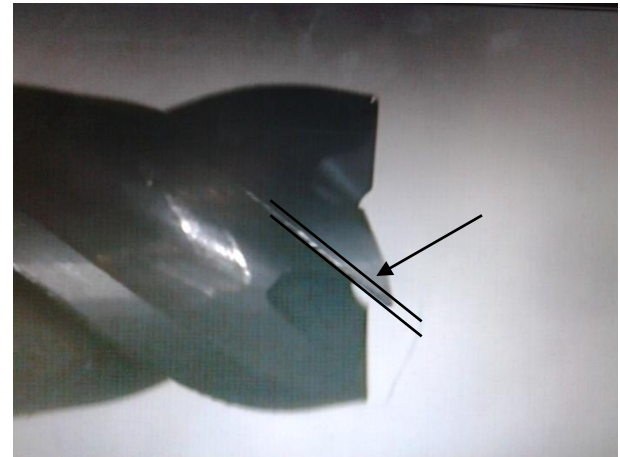
**Processing parameters:**  
**S8000 r/min**  
**F1500 mm/min**  
**Ap:5.0mm**  
**Ae:0.05 mm**  
**Cooling: Cooling oil**



## Flank wear of cutting tool



**2 days after a Taiwan brand tool processing**



**OSK tool processing 3 days later**

**Summary :**



**OSK this tool life is 1.5 times the life of a certain brand of Taiwan**

**OSK this tool features share:**

**The German import tungsten steel bar**

**Super wear resistant composite coating**

**Cutting tool design: special design of chip removal spiral groove**



**The End**

**Thank You Very Much**